

The WPBP is a specially designed weigh bar. Ideal for use in floor scales and weighing systems, grain carts, gravity carts, feed mixers, fertilizer and manure spreaders commonly found in the agriculture industry.



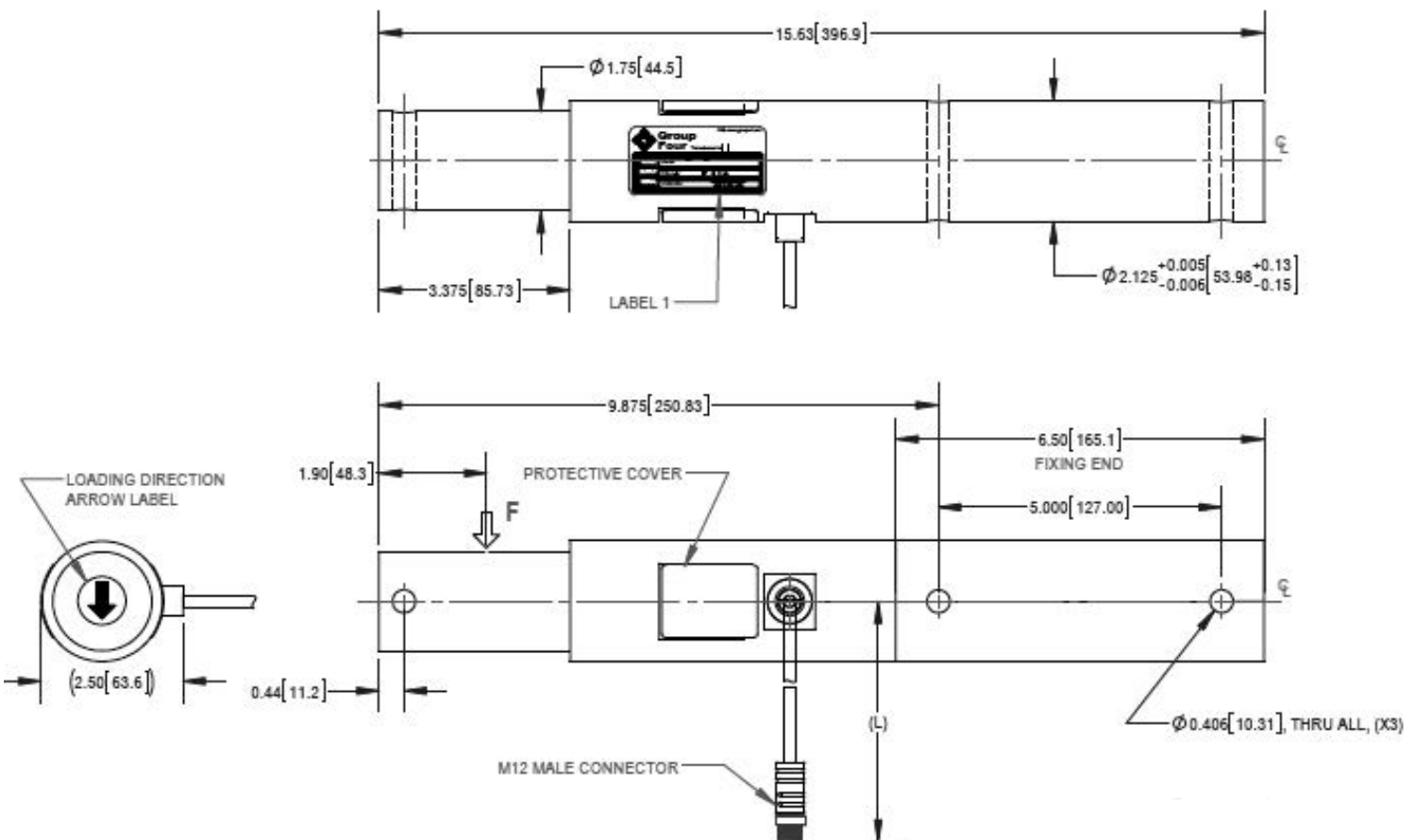
FEATURES

- Capacity 10klb
- Stainless steel construction
- Special design for dirt repelling
- Environmental protection IP68

APPLICATIONS

- Agriculture implants
- Grain carts
- Gravity carts
- Feed mixers
- Fertilizer
- Manure spreaders
- Wash down applications
- Floor scales

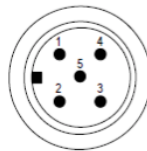
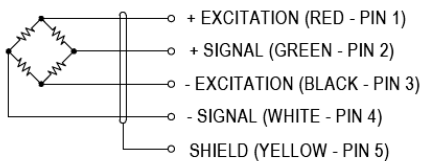
OUTLINE DIMENSIONS



SPECIFICATIONS

Model	WPBP	
Capacity	klb	10
Full Scale Output	mV/V	0.5 ±0.1%
Calibration IN mV/V/ Ω	%	≤±0.05
Non Linearity	%FS	≤±0.1
Hysteresis	%FS	≤±0.1
Creep @ 30min	%FS	≤±0.03
Zero Balance	mV/V	≤±5
Temperature Effect		
Output	%FS/10°C	≤±0.04
Zero	%FS/ 10°C	≤±0.04
Temperature Range		
Compensated	°C	-10 ~ +40
Operating	°C	-20 ~ +65
Terminal Resistance		
Input	Ω	386±30
Output	Ω	350±5
Excitation Voltage	VDC	5~ 15
Insulation Resistance @50VDC	M Ω	≥5000
Safe Overload Limit	%FS	150
Ultimate Load	%FS	200
Cable Length (L)	see table 1	
Cable Type	22 AWG 4 Core Black PVC Cable with shield	
Seal Type	IP68	
Element Material	Stainless Steel	

WIRING GRAPHIC



Front view of M12 Male Connector

PART NUMBER

Capacity (klb)	Part Number	
	GEN	A
10	1062-000-00	1062-000-01

	GEN	A
Cable Length (ft)	30 ^{+0.17} ₀	15 ^{+0.17} ₀