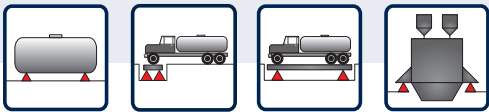


▶ Ring-Torsion load cell V50S



Features

- ▶ Material: Alloy steel
- ▶ Nominal load: 10,000 kg - 150,000 kg
- ▶ Accuracy class 0.03
- ▶ Construction: laser-welded, protection class: IP65
- ▶ Particularly robust for tough continuous use in industrial applications
- ▶ Low construction height of the ring torsion load cells

Scope of application:

- ▶ Maschinenwaagen
- ▶ Cargowaagen
- ▶ Silo- und Tankwägung
- ▶ Behälterwaagen
- ▶ Coilwaagen
- ▶ Schwerlastwaagen
- ▶ Kraftmessungen in der Prozessindustrie.



Ring-Torsion load cell V50S

Ring torsion load cells for use in harsh industrial environments

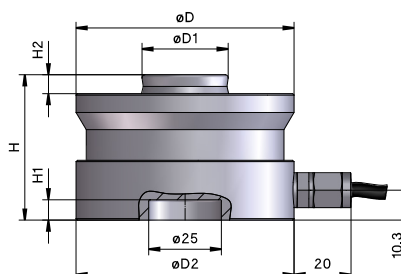
The V50S ring torsion load cells are used to measure compression forces in a wide range of industrial applications. The load cells are symmetrically designed and very compact, enabling precise measurements even in harsh industrial environments. The forces are always applied centrally in the load cells. The

high load load cell is made of high quality alloy tool steel, laser welded and meets the requirements of protection class IP65.

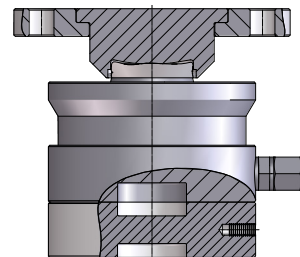
TECHNICAL DETAILS

Accuracy class according to OIML R 60		G3
Nominal load (E_{max})	kg	10.000, 22.000, 33.000, 47.000, 68.000, 100.000, 150.000
Number of division values (n_{LC})		3000
Nominal value (C_n) / Characteristic tolerance	mV/V	$2,85 \pm 0,01$
Characteristic value of the relative minimum division value d. WZ ($Y = E_{max} / v_{min}$)	% from Emax	10 000
Minimum preload (E_{min})		0
Limit load (E_L) Breaking load (E_d)	% from Emax	150 200
Empfohlene Versorgungsspannung (U_{ref}) Maximum permissible supply voltage (B_U)	V	5 - 12 15
Zero adjustment	% v. C_n	$\leq 1\%$
Input resistance (R_{LC}) at reference temperature Output resistance (R_o) at reference temperature	Ω	1450 ± 10 1402 ± 5
Insulation resistance	M Ω	$> 5\,000$
Nominal temperature range (B_T)	$^{\circ}C$	- 10 ... + 40
Protection class according to (DIN 40.050 / EN 60529)		IP65
Cable length		16 m, 12 m
Material		Alloy steel

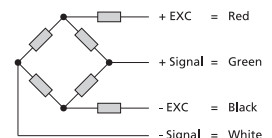
TECHNICAL DRAWINGS



Einbaubeispiel



Electrical connection
4-wire cable



Load	D	D1	D2	H	H1	H2
10 - 22 t	75	30	75	50	7	6,5
33 t	95	40	95	65	7	10
47 t	130	60	130	75	7	14
68 t	130	60	130	85	7	14
100 t	150	70	150	90	7	16
150 t	150	70	150	100	7	16

Alle Angaben in mm | Technische Änderungen vorbehalten