



Applications:

Off center load cell type BM6A can be used in small capacity weighing systems.

Some applications are:

- Suitable for platform scale, packaging machines, etc.
- Max. Platform size: 350x350mm.

Main features:

- OILM test certificate No.: TC7834 Revision 1
- OILM C of C No.: R60/2000-NL-1-10.32
- Stainless steel IP68 single point load cell.
- Hermetically sealed.

Nominal load:

Kg: 6-12-30-60

Capacity	Accuracy	Part-Number
6Kg	C3	BM6A-C3-6KG-6B6
12Kg	C3	BM6A-C3-12KG-6B6
30Kg	C3	BM6A-C3-30KG-6B6
60Kg	C3	BM6A-C3-60KG-6B6



**OFF CENTER
LOAD CELL
TYPE BM6A**

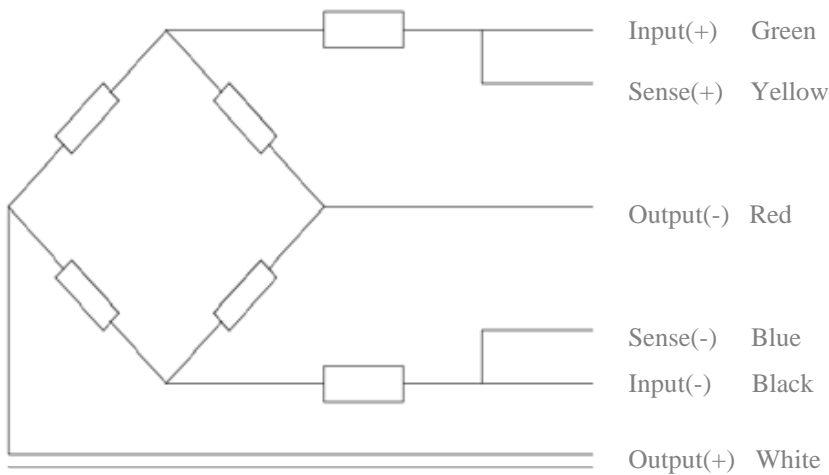
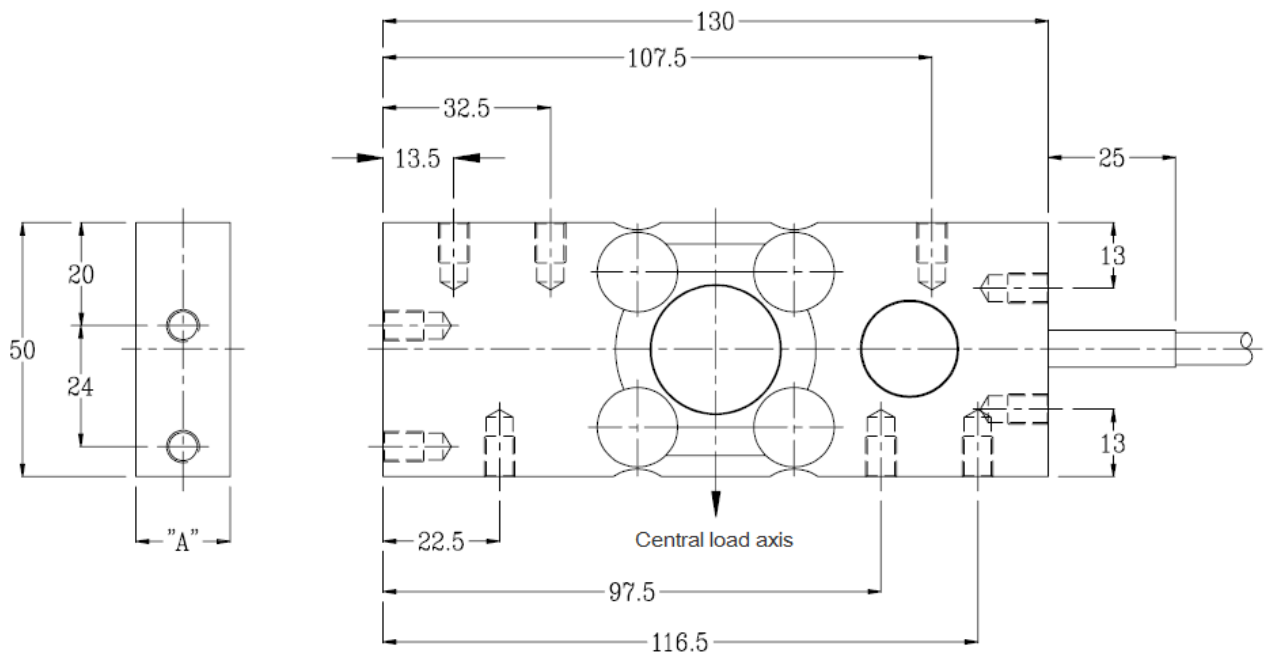
Specification according to VDI/VDE 2637

Metrological Characteristics	Par.	Un.	OIML R60 C3
Nominal Load	Ln	Kg	6÷60
Maximum number of load cell intervals		nlc	3000
Zero Temperature Drift (10÷60°C, over 10°C)	TKo	±%Cn	0,011
Output Temperature Drift (10÷60°C, over 10°C)	TKC	±%Cn	0,015
Combined Error		%FS	≤± 0,023
Electrical Data			
Nominal Output	Cn	mV/V	2
Nominal Output Tolerance	Dc	±%Cn	10
Nominal Supply Voltage	Bsu	V	5÷12
Maximum Supply Voltage	Usmax	V	18
Input Resistance	Re	Ω	400±20%
Output Resistance	Ra	Ω	350±3,5%
Insulation Resistance @ 20V	Ris	MΩ	>5000
Safe Overload		Of Emax	150%
Maximum overload		Of Emax	300%
Zero Balance		Of FS	≤±1,5%
Environmental Conditions			
Working Temperature Range	Btn	°C	-35+65
Compensated Temperature Range	Bts	°C	-10+40
Housing Protection			IP -68
Element Material			Stainless steel
Recommended torque on fixation		Nm	10

Subject to change without notice

Dimensions:

(in mm; 1mm = 0.03937 inches)



Wiring:

- Shielded cable, 6 conductor cable.
- Cable diameter: Ø6.2mm
- Standard cable length: 6m
- Shield not connected to element
- All threads are M6 x 1; 8mm deep