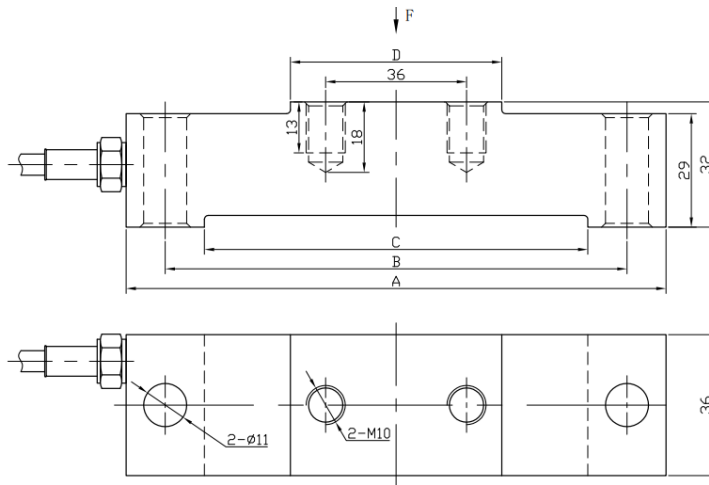
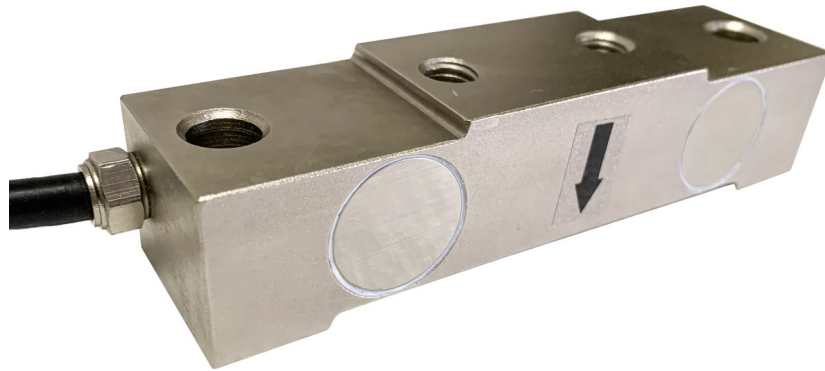


OWL11 Load Cell



Capacity	A	B	C	D
250-1000kg	182mm	160mm	138mm	60mm
1.5-2t	138mm	118mm	98mm	54mm

Specifications

Capacity (ton)	0.25, 0.5, 1, 1.5, 2	Insulation (MΩ)	5000
Rated Output/RO (mV/V)	2.00 ± 0.005	Recommended Excitation (V)	10V (DC/AC)
Zero Balance (mV/V)	±1.00%	Maximum Excitation (V)	18
Non-Linearity (%RO)	±0.02	Compensated Temp Range (°C)	-10~+50
Hysteresis (%RO)	±0.02	Operating Temp Range (°C)	-20~+60
Repeatability (%RO)	±0.01%	Safe Overload (%RO)	120
Creep (%RO/30min)	< 0.010	Ultimate Overload (%RO)	225
Temp effect on output (%RO/10°C)	±0.02	Cable Size (mm)	Ø5.4 x 5000
Temp effect on zero (%RO/10°C)	±0.02	Cable Length (m)	6
Input Impedance (Ω)	770±15	Material	Stainless Steel
Output Impedance (Ω)	700±5	Protection Class	IP67
Excitation +ve	Red	Signal +ve	Green
Excitation -ve	Black	Signal -ve	White