



PT5100 Shear Beam Welded Stainless Shear Beam



... Azure Signature Series!

The PT5100 is a stainless steel shear beam load cell, welded sealed with a protection rating of IP68. Suitable for demanding environmental conditions or wash-down situations or where peace of mind for a long life of demanding use is desired.

The dimensions of the PT5100 enable compatibility with many industry standard square beams from numerous manufacturers, including the LCSB and PT5000, conveniently providing replacements and upgrades.

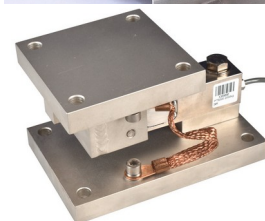
Available in 6 capacities from 250kg to 5000kg with 6 metres of 4 core cable, every load cell is precision tested and verified to meet exact requirements.

GENERAL FEATURES

- Stainless steel.
- Welded sealed to IP68
- Capacities 250kg to 5000kg
- Standard sizes compatible with PT5000, LCSB and many other manufactures
- Easy fixing

APPLICATIONS

- Hoppers, silos, tanks
- Platform scales
- Process weighing applications
- Food and pharmaceuticals
- Agricultural applications



Specifications

Signal Output at Capacity.....	2±0.005mV/V
Linearity Error.....	< 0.020% FSO
Non-Repeatability.....	< 0.010% FSO
Combined Error.....	< 0.020% FSO
Hysteresis.....	< 0.020% FSO
Creep/(30 mins.).....	< 0.020% FSO
Zero Balance.....	< 1 % Capacity
Temperature Effect on Span(/10C).....	< 0.015% FSO
Temperature Effect on Zero(/10C).....	< 0.015% Cap.
Operating Temperature Range.....	-20 ~ 65 C
Storage Temperature Range.....	-50 ~ 85 C
Excitation +ve.....	RED
Signal +ve.....	GREEN

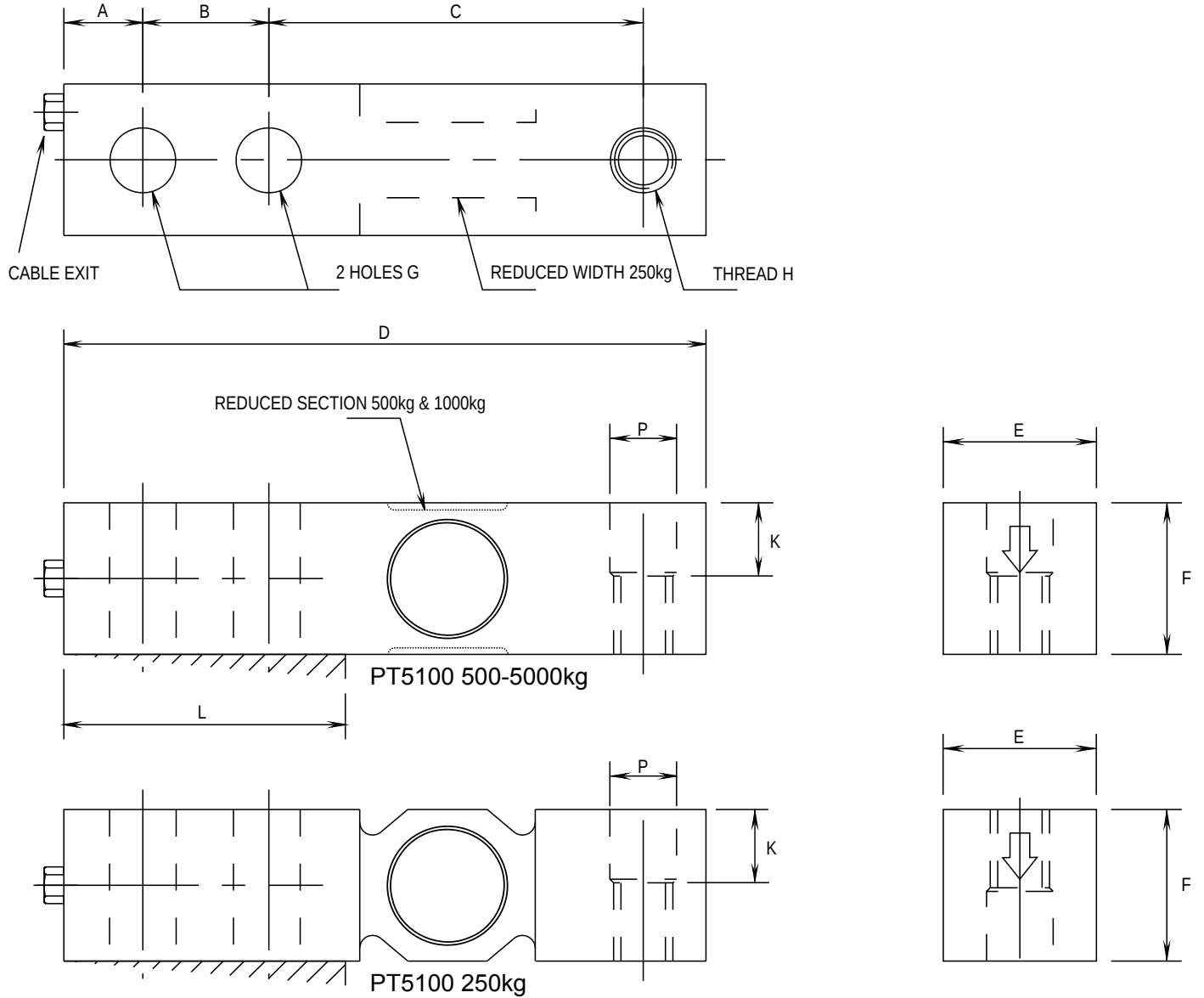
Service Load.....	100% Capacity
Safe Load.....	150% Capacity
Safe Side Load.....	100% Capacity
Ultimate Load.....	300% Capacity
Input Resistance.....	350Ω ± 3Ω
Output Resistance.....	350Ω ± 3Ω
Insulation Resistance.....	> 5000 MΩ (@50 VDC)
Excitation Voltage(Rec).....	5~15 V AC/DC
Excitation Voltage(Max.).....	18 V AC/DC
Cable.....	6m Dia. 4.5~5.0 mm
Material.....	17-4PH Stainless Steel
Excitation -ve.....	Black
Signal -ve.....	White

- FSO, at Full Scale Output; Cap., at Capacity
- Construction is welded stainless steel sealed to IP68
- Reverse the signal wire connection when mounting the load cell upside down



DIMENSIONS

Dimensions below in mm.



With the symmetrical square shape the PT5100 can be mounted upside down and loaded in reverse so the thread can be top side or bottom side.

Dimensions, units in mm and kg.

Capacity	Order	A	B	C	D	E	F	G	H	K	L	P	Weight(kg)
250kg	51M0250S000XXX	16.0	25.4	76.2	130.0	30.8	30.8	13.5	M12 x 1.75P	16.0	57.2	13.5	1.14
500kg	51M0500S000XXX	16.0	25.4	76.2	130.0	30.8	30.8	13.5	M12 x 1.75P	16.0	57.2	13.5	1.14
1000kg	51M1000S000XXX	16.0	25.4	76.2	130.0	30.8	30.8	13.5	M12 x 1.75P	16.0	57.2	13.5	1.14
2000kg	51M2000S000XXX	16.0	25.4	76.2	130.0	30.8	30.8	13.5	M12 x 1.75P	16.0	57.2	13.5	1.14
3000kg	51M3000S000XXX	19.0	38.1	95.3	171.5	38.1	38.1	20.5	M20 x 2.5P	19.0	76.2	20.5	1.94
5000kg	51M5000S000XXX	19.0	38.1	95.3	171.5	38.1	38.1	20.5	M20 x 2.5P	19.0	76.2	20.5	1.94