

General information

PWS1420260415

The 65083 shear beam load cell has been designed for the weighing of hoppers and tanks and for the construction of low profile platforms, it has excellent characteristics of linearity, precision and resistance to 100% static lateral loads. The 65083 shear beam cell is made of stainless steel and is equipped with watertight protection for use in severe environmental conditions and shielded 4-conductor cable 6.6 meters long for electrical connections. Moreover, it is also available in a special version for high temperatures. The strength of the 65083 shear beam load cell is its unbeatable competitive price-quality ratio. In addition, mounting accessories MH MOUNTING KIT and MKX are available to facilitate assembly and installation.



Suggested related products

A highly performing weighing system must be accurate, perfectly calibrated and well maintained. In order to improve the load cell performance and to optimize its functioning, you may need the following products:

Weight Transmitter [DAT 1400](#)

Weight Indicator [MCT 1302](#)

Mounting kits [MKX](#) ®

Tester 1008 [TESTER 1008](#)

Junction Box [CGS4-C](#)

Double Shear Beam Load Cell [DDR](#)

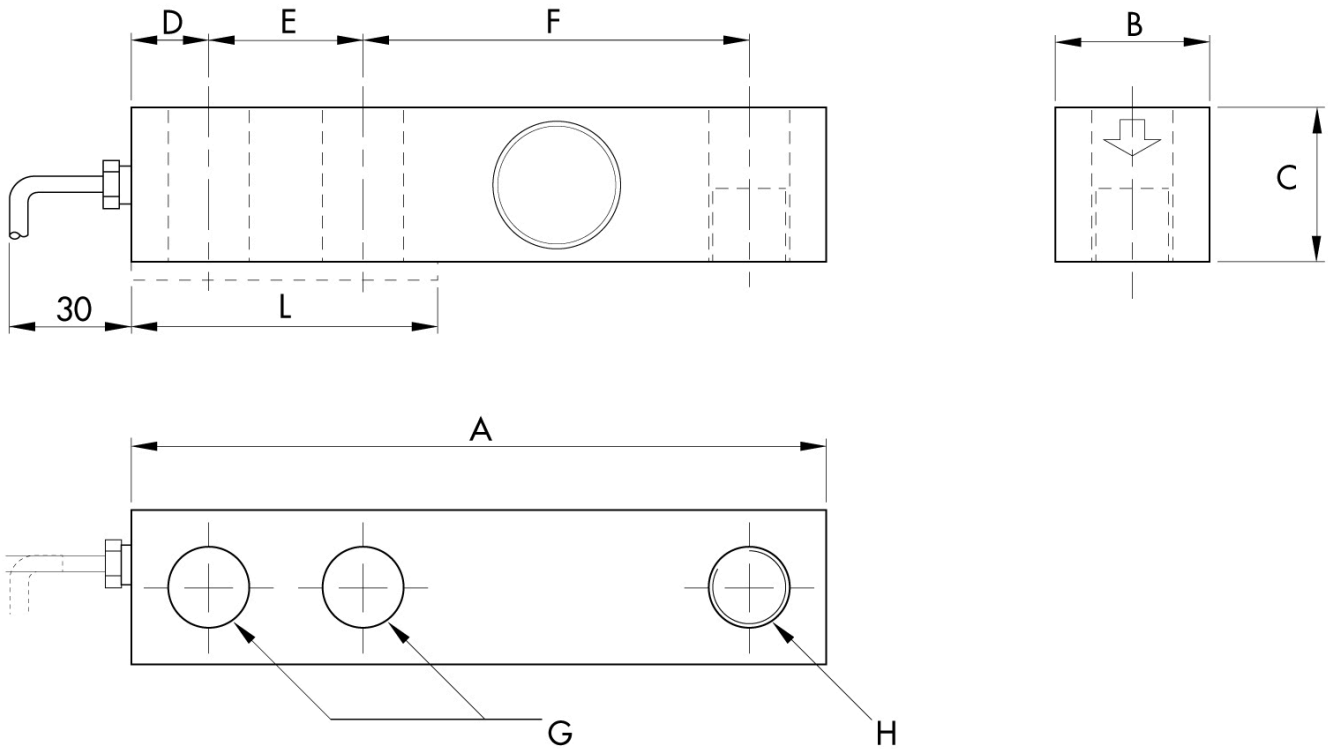
All indicated data may be changed without notice.
All the measures indicated are expressed in millimeters (mm).

Technical specifications

PWS1420260415

| | |
|--|--|
| Rated Load (RL): | 0,5, 1, 2, 3, 5 t |
| Combined error: | ±0.02 % RO |
| Repeatability: | ±0.01 % RO |
| Creep (20 minutes): | ±0.017 % RO |
| Safe overload: | 150 % RL |
| Ultimate overload: | 300 % RL |
| Clamping force without any load: | RL 500÷2000 kg: 136 Nm; RL 3000÷5000kg: 205 Nm |
| Material: | Stainless steel |
| Degree of protection: | IP68 |
| Accuracy class: | 3000 OIML |
| Deflection: | 0.2 ÷ 1.4 mm |
| Compensated Temperature: | -10 ÷ +40°C |
| Temperature range: | -18 ÷ +65°C |
| Temperature effect on zero balance: | 0.018 % RO/10°C |
| Temperature effect on output: | 0.012 % output/10°C |
| Rated output RO: | 2 mV/V ± 0.25% |
| Zero balance: | ±1 % RO |
| Insulation resistance: | > 1000 M Ohm |
| Input resistance: | 343 ÷ 357 Ohm |
| Output resistance: | 349 ÷ 355 Ohm |
| Recommended input: | 5 ÷ 15 Vdc/Vac |

All indicated data may be changed without notice.
 All the measures indicated are expressed in millimeters (mm).


Electrical Connections

| | |
|-------------|--------------|
| +Excitation | Red |
| -Excitation | Black |
| +Signal | Green |
| -Signal | White |
| Shield | Cable Shield |

CAPACITY kg

| | 500-2000 | 3000-5000 |
|---|----------|-----------|
| A | 130 | 171.5 |
| B | 31 | 38.1 |
| C | 31 | 38.1 |
| D | 15.8 | 19.1 |
| E | 25.4 | 38.1 |
| F | 76.2 | 95.3 |
| G | 13.5 | 20.6 |
| H | M12x1.75 | M20x2.5 |
| L | 57 | 76 |

All indicated data may be changed without notice.
 All the measures indicated are expressed in millimeters (mm).