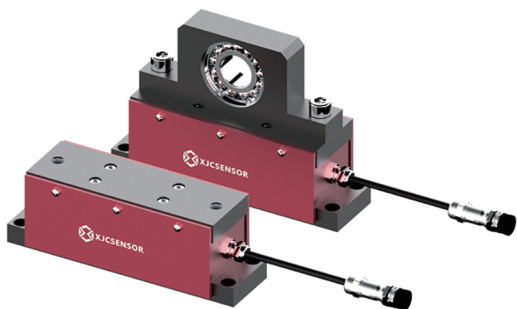


X-ZL15



Feature

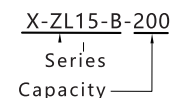
- ★ Easy to install and replace the bearing and tension roller.
- ★ Built-in new mechanical 10 times anti-overload protection.
- ★ Minor temperature drift, good non-linearity and repeatability.
- ★ Strong connections provide long-term reliability.
- ★ Drilling and tapping are available.
- ★ Can eliminate the interference of other forces, only measure tension to improve accuracy.

Dimension and capacity can be customized by request.

Technical specifications

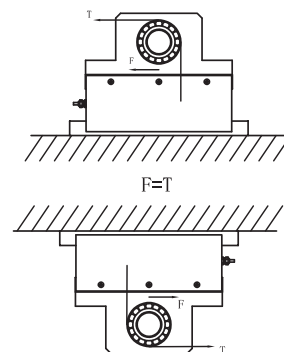
Nonlinearity	≤0.3% F.S.	Rated output	1.5 ± 0.2mV/V
Repeatability	≤0.15%F.S.	Zero balance	±2% F.S.
Operating temp range	-20~80°C	Compensated temp range	-10~40°C
Temp effect on zero	≤0.02%F.S /°C	Insulation	≥2000MΩ/100VDC
Recommended excitation	5~10VDC	Ultimate load limit	300%F.S.
Cable size	∅ 5x5m	Protection class	IP63
Cable connection	Ex + : Red; Ex - : Black; Sig + : Green; Sig - : White		

Naming rules

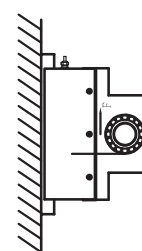


Load direction

Horizontal Installation

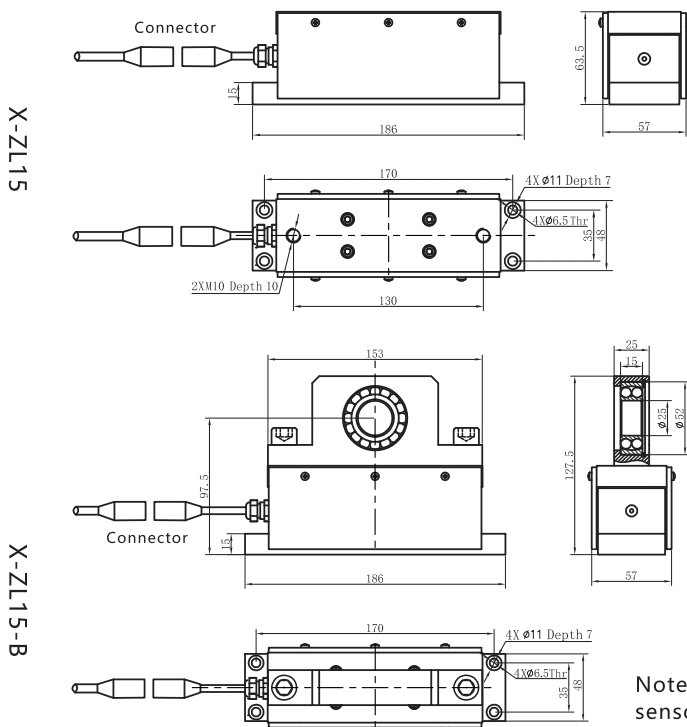


Horizontal Inversion



Vertical Installation

Dimensional Drawings (mm)



Model no	Capacity(kg)
X-ZL15-15	15
X-ZL15-25	25
X-ZL15-50	50
X-ZL15-100	100
X-ZL15-200	200
X-ZL15-B-15	15
X-ZL15-B-25	25
X-ZL15-B-50	50
X-ZL15-B-100	100
X-ZL15-B-200	200

Note: The rated load is only applicable to the value of a single sensor, and if installed on both sides, it is twice the above.

Applications

It can be used to measure and control the tension of materials during processing, such as paper, label, tape, battery electrode, high performance film and other narrow materials. The sensor's detection signal is not affected by the position of the coiled material on the roller.