

X-S06



Feature

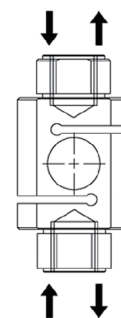
- ★ Adopts high-precision resistance strain principle
- ★ Supports force measurement in the range of 0-10ton.
- ★ Oil, water, corrosion resistance
- ★ S structural design, compression and tension, easy to install and flexible.

Dimension and capacity can be customized by request.

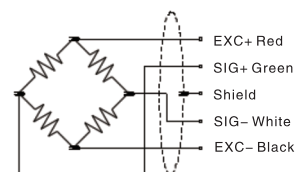
Technical specifications

Capacity (Optional)	50kg, 100kg, 200kg, 500kg, 1t, 2t, 5t, 10t	Material	Alloy steel
Nonlinearity	0.05 ~ 0.1 % F.S.	Rated output	2. 0 ± 0.05 mV/V
Recommended excitation	5-10VDC	Maximum excitation	10V DC
Protection class	IP65	Compensated temp range	- 10 ~ 40 °C
Hysteresis	0.05 ~ 0.1 % F.S.	Operating temp range	- 20 ~ 80 °C
Repeatability	≤ 0.05% F.S.	Insulation	≥ 2000M Ω /100VDC
Input impedance	380 ± 30 Ω	Output impedance	350 ± 5 Ω
Creep (30min)	≤ 0.05% F.S.	Temp effect on output	≤ 0.05% F.S. / 10°C
Zero balance	± 2% F.S.	Temp effect on zero	≤ 0.05% F.S. / 10°C
Safe load limit	150% F.S.	Ultimate load limit	200%F.S.
Cable size	Ø5x3m	Fatigue life	Full scale more than 1 million times
Cable connection	Ex + : Red; Ex - : Black; Sig + : Green; Sig - : White		

Load direction

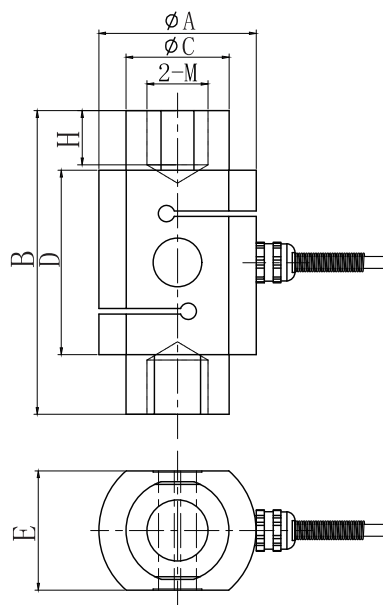


Wiring code



Dimensional Drawings (mm)

Capacity	A	B	C	D	E	M	H
0.05/0.1/0.2/0.5t	44	88	28	56	26	M16*1.5	18
1/2/5t	58	112	38	68	44	M24*1.5	24
10t	84	160	60	103	58	M36*4	36



Applications

Mainly used for electro-mechanical scales, lifting scales, hopper scales, packing scales, sorting scales, various special scales and industrial measuring system.