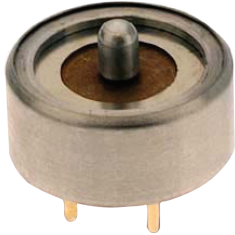


S420 Circuit Board Mounted Load Cell



The **S420 Load Cell** is a new circuit board mounted load cell intended for applications requiring accurate measurement of full scale forces of up to 25 pounds-force. It can be soldered directly into a rigid printed circuit board. A 5,000 Ω bridge offers low power consumption for extended battery life in portable products. Ideal for use in medical instrumentation, laboratory use, or office equipment force measurement applications. The load cell can be customized for additional full-scale ranges, heights, and load button

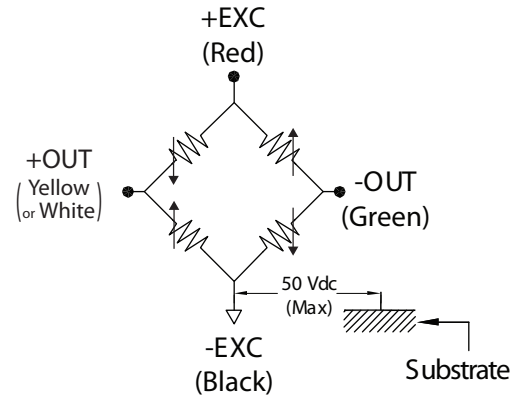
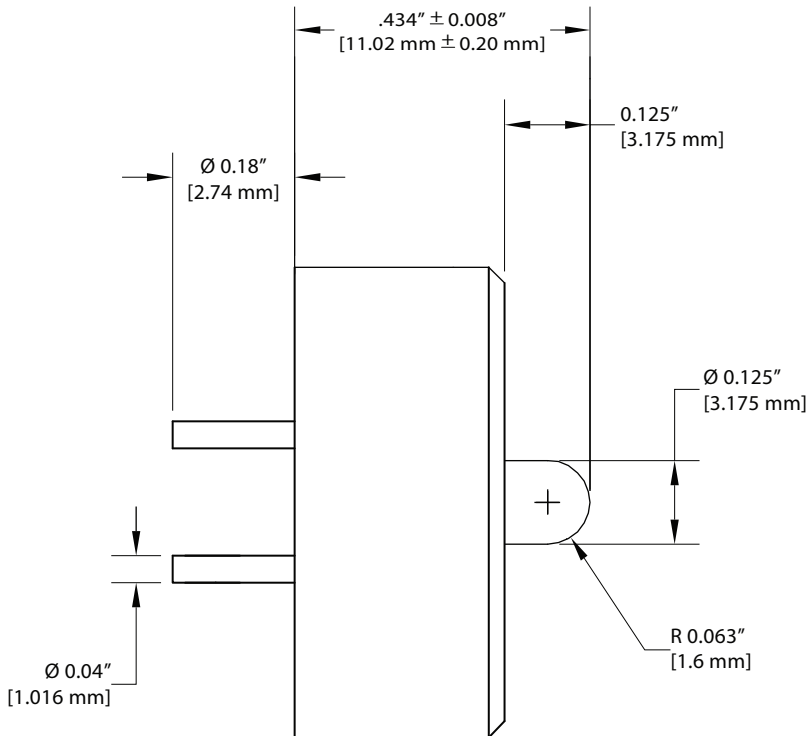
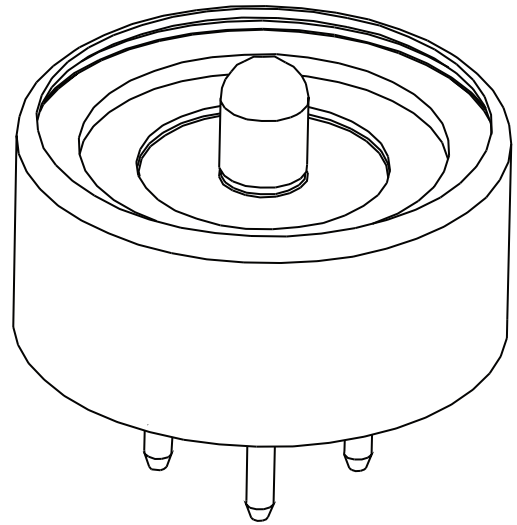
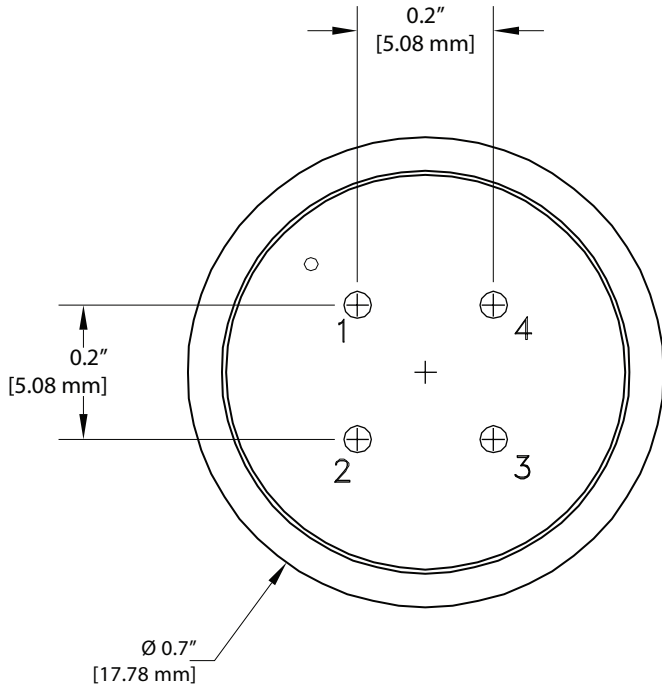
Product Specifications:	
Rated Capacity:	25 lb-force
Rated Output:	1.8 mV/V Nominal
Hysteresis:	0.03% FSO
Ultimate Overload:	100% of Range
Insulation Resistance:	> 1000 M Ω @ 50 Vdc
Bridge Resistance:	5000 Ω
Bridge Configuration:	4-Wire Closed, Full-Bridge
Temp. Effect on Zero Balance:	< 0.1% of Span / $^{\circ}$ C
Temp. Effect on Span:	> 0.05% of Reading / $^{\circ}$ C
Excitation (Recommended):	5 to 20 V ac / dc
Electrical Termination:	0.04 DIA Gold-Plated Pins
Nonlinearity:	< 1% of Span
Repeatability:	< 0.5% of Span
Offset:	0.75 mV / V Nominal

Features:

- Circuit Board Mountable
- No Wires or Connectors
- Low Power Consumption
- Long-Term Stability
- Low Hysteresis
- Economical

Applications:

- Medical Instrumentation
- Office Equipment
- Laboratory Use
- Force Measurement
- Consumer Products



Part Name	Rated Capacity
S420-25	25 lb [11.3 kg]