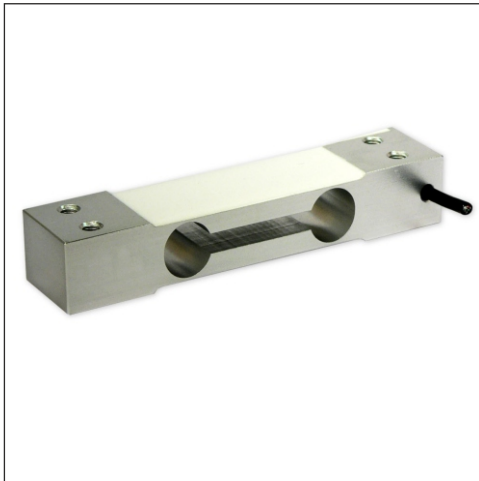


● Characteristics

3 - SINGLE POINT - COUNTING SCALE - RETAIL - LABORATORY



- Ranges:	0...3 up to 0...200 kg
- Output:	2 mV/V (±5%)
- Voltage supply:	9...12 VDC
- Accuracy:	<0,2% of range
- Output resistance:	350 Ω ±5 Ω
- Temperature range:	-20...+55 °C (operation)
- Insulation resistance:	>5000 MΩ (50 VDC)
- Safe overload:	120% of range
- Material:	aluminium alloy
- Protection:	IP65
- Cable length:	standard 420 mm

● Technical Data

Input

Ranges:	3 / 6 / 10 / 15 / 20 / 30 / 35 / 40 / 45 / 50 / 60 / 80 / 100 / 120 / 150 / 200 kg
Input resistance:	400 Ω, ±10 Ω

Output

Nominal load:	2,0 mV/V ±5%
Zero load:	±1,5 % of range
Output resistance:	350 Ω, ±5 Ω

Accuracy

Repeatability:	0,02 % of range
Non-linearity:	0,02% of range
Hysteresis:	0,02% of range
Creep:	0,02% of range / 30 min
Temperature coefficient:	
of span:	0,2% of range / 10°C
of zero:	0,3% of range / 10°C

Supply

Voltage:	9...12 VDC standard value (maximum: 5...18 VDC)
Insulation resistance:	>5000 MΩ at 50 VDC

Environmental Conditions

Temperature:	compensated range: -10...+40°C operation range: -20...+55°C
--------------	--

Mechanics

Dimensions:	see page 2
Platform size:	350 x 350 mm (recommended)
Material load cell:	aluminium alloy, anodized
Safe overload:	120% of nominal load
Breaking load:	150% of nominal load
Protection class:	IP65
Connection:	420 mm cable, shielded, 4-wire, Ø3 mm

● Applications

This single point load cell allows a cost-efficient installation of platform weighing equipment for commercial and research applications (counting weights and band scales), while retaining small dimensions.



Photo: © Paul-Georg Meister @pixelio.de



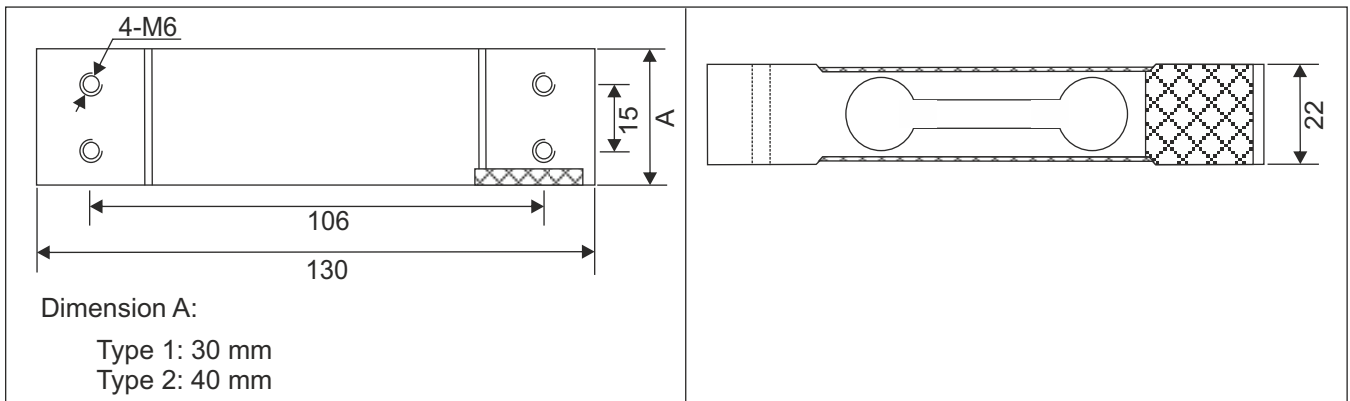
Photo: © Gerda Bruske @pixelio.de



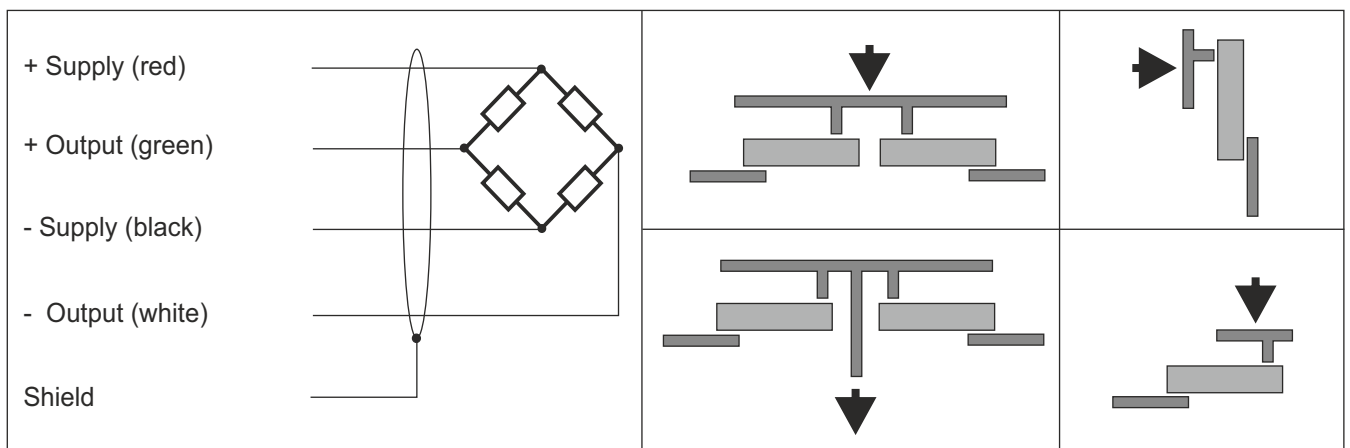
Photo: © H.-J. Spengemann @pixelio.de

● Ranges, Dimensions (in mm)

kg	3	6	10	15	20	30	35	40	45	50	60	80	100	120	150	200	
Type 1	X	X	X	X	X	X	X	X	X	X	X	X	X				
Type 2				X		X		X	X	X							



● Connection and Application Example



● Order Code

P W X X X X X X - X X X

Load cell:	Type 1 (3...120 kg)	0																
	Type 2 (20...200 kg)	1																
Range:	3 kg	0																
	6 kg	1																
	10 kg	2																
	15 kg	3																
	20 kg	4																
	30 kg	5																
	35 kg	6																
	40 kg	7																
	45 kg	8																
	50 kg	9																
	60 kg	A																
	80 kg	B																
	100 kg	C																
	120 kg	D																
	150 kg	E																
	200 kg	F																
Output:	2 mV/V	0																
Connection:	cable 420 mm, 4-wire	0																
Other:	special model	0																

Subject to change, version 44-160